

GEA VARIPUMP



GEA Hilge HYGIA

Single-stage, End-suction Centrifugal
Pumps for Advanced Applications

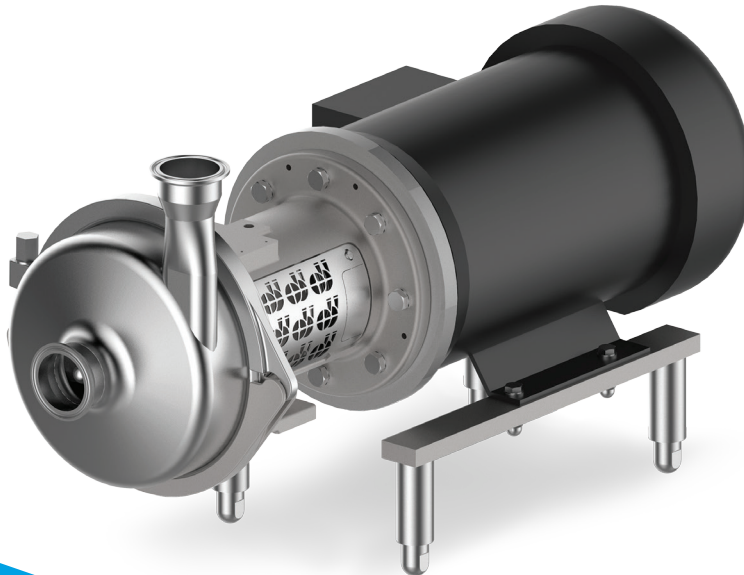
More Flexibility for Your Demanding Process Applications

The premium pump series GEA Hilge HYGIA, a member of the GEA VARIPUMP line, consists of single-stage, end-suction centrifugal pumps, constructed for use in industries with high demands for hygiene and flexibility.

Corresponds to the highest global hygiene requirements

Produced of high-quality materials that meet the highest global hygiene standards, GEA Hilge HYGIA also offers superior flexibility. Apart from ASME and ISO connections, a flexible range of custom connections is available upon request.

The pumps are equipped with operating-point-optimized impellers. Different impeller geometries are available.



GEA Hilge HYGIA Adapta

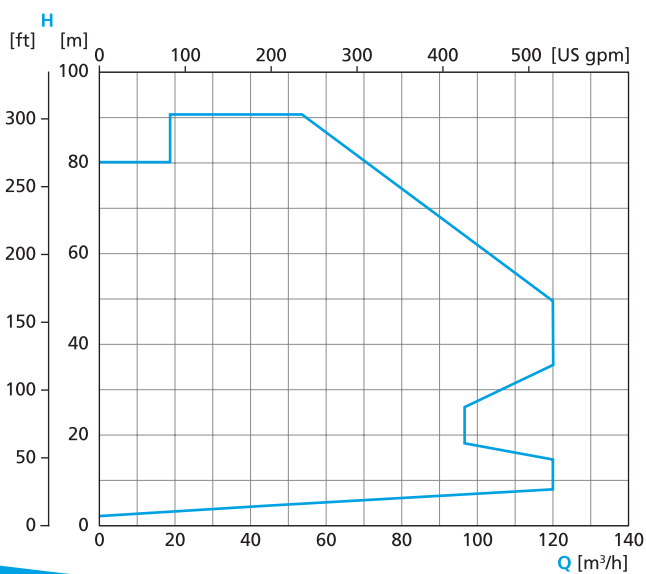
DESIGN VARIANTS – GEA HILGE HYGIA

Standard variants	Description
GEA Hilge HYGIA Adapta	Close-coupled pump with bearing bracket and coupling, horizontal installation
GEA Hilge HYGIA Adapta-SUPER	Close-coupled pump with bearing bracket and coupling, horizontal installation, motor with stainless steel shroud
GEA Hilge HYGIA K	Close-coupled pump with plug-in shaft connection, horizontal installation
GEA Hilge HYGIA K-SUPER	Close-coupled pump with plug-in shaft connection, motor with stainless steel shroud, horizontal installation
Variations upon request	Description
GEA Hilge HYGIA tronic	Motor with built-in frequency converter (up to 29.5 hp)

TECHNICAL DATA

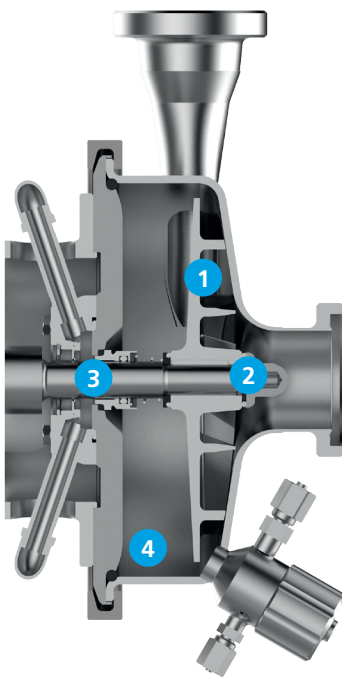
GEA Hilge HYGIA	60 Hz
Flow	528 gpm (120 m ³ /h)
Head	302 ft (92 m)
Operating temperature	up to 203 °F (95 °C) 302 °F (150 °C) upon request
Sterilization temperature	up to 284 °F (140 °C) (SIP)
Operating pressure	232 to 362 psi max (16 up to 25 bars)

GEA HYGIA PERFORMANCE CURVE 60 HZ





FEATURES AND BENEFITS



1 Optimized impeller

Open and closed impellers available as well as free-flow impellers

2 Hygienic construction

The constructional design allows optimal cleaning (CIP) and sterilization (SIP)

3 Inboard mechanical seal

For effective cleaning, cooling and lubrication

4 Dead-end free design

The pumps meet the highest hygienic demands to avoid contamination

The GEA Hilge HYGIA pump can be flexibly employed in all application ranges where reliable hygienic pump function is required. This includes the following areas:

Food & beverage industry

- Breweries
- Dairies
- Soft drinks
- Yeast processing

Life science/pharmaceutical industry

- Pumping of sterile and pure water (WFI)
- Biotechnology
- Infusions (nutrient solutions, alcohol)
- Filling stations

Personal care

- Purified water, WFI
- Lotions
- Perfumes

Additional industrial applications

- Cleaning processes (CIP systems)
- Water technology processes
- Semiconductor production
- Metal surface treatment
- Biofuel
- Water treatment systems
- Textile industry
- Paint systems



Suitable for the highest standards

The materials used in GEA Hilge HYGIA pumps have been selected for use in hygienic processes. The housings are made of CrNiMo rolled steel AISI 316L and have a smooth surface without pores and blowholes.

Certification-compliant

GEA Hilge HYGIA pumps are CIP/SIP-able. The media-contacting parts meet the requirements of the 3A-standards and the EHEDG test certificate is proof of CIP cleaning capacity.

Mechanical seals – choose the one to suit you

A wide range of mechanical seal options is available to suit different media and applications. The mechanical seals used in the GEA Hilge HYGIA range are single inboard seals that maintain the optimum position in the liquid.

Choices include

- Sterile single mechanical seal
- Double mechanical seals (tandem or back-to-back)
- Standard seal face material: carbon/stainless steel and SiC/SiC
- Standard O-ring material: EPDM (FDA-compliant)
- Additional designs and materials available upon request





We live our values.

Excellence • Passion • Integrity • Responsibility • GEA-versity

GEA is a global technology company with multi-billion euro sales operations in more than 50 countries. Founded in 1881 the company is one of the largest providers of innovative equipment and process technology. GEA is listed in the STOXX® Europe 600 Index. In addition, the company is included in selected MSCI Global Sustainability Indexes.

GEA North America

33 McAlister Farm Road
Portland, ME 04103
Toll-Free 866 531 5629
Fax 207 878 7914

GEA Canada

5045 South Service Road, Suite 201
Burlington, Ontario L7L 5Y7
Tel 289 288 5500

Email sales.unitedstates@gea.com
gea.com